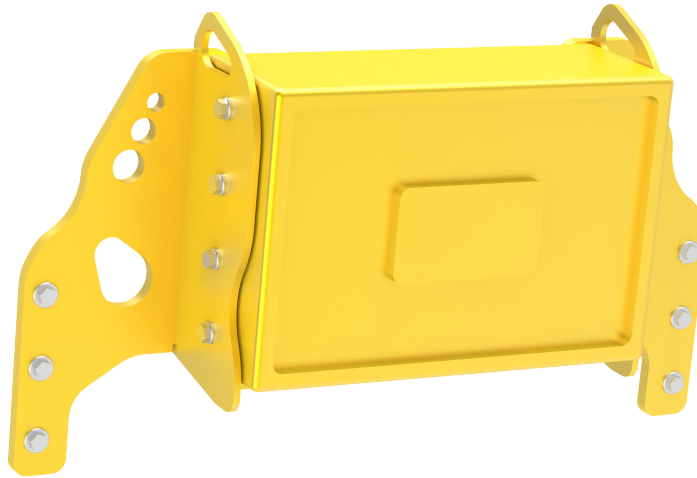


# IRON SEPARATOR 24 V



## SPECIFICATIONS

MAGNET'S STRENGTH	900 W
DIMENSIONS	600 x 400 x 200 mm
OPTIMAL OPERATING DISTANCE	150 mm CA.
WEIGHT WITHOUT SUPPORT	220 kg

## INCLUDED WITH THE IRON SEPARATOR KIT

- ELECTROMAGNET
- MAGNET'S SUPPORT
- INSTALLATION KIT

## COMPATIBLE MODELS

SUPPORT WEIGHT	BF60.1 S4 60 kg	BF70.2 S4 70 kg	BF80.3 S4 75 kg	BF90.3 S4 75 kg	BF120.4 S4 110 kg	BF135.8 120 kg

## NOTE

The power supply's voltage cannot be less than 24 V and have an alternator with a minimum power of 40 A.